



HOW TO CREATE A LABEL

1. Open your Gamma Label.
2. Click on File → New Label → Choose the size or create a custom size

G Label Properties

Print Stock:
1in dia. (1.52in flat)

Dimensions

Auto Size Flat Height: 1.520 in.

Fixed Width Width: 3.000 in.

Margins

Left: 0.000 in. Right: 0.000 in.

Top: 0.000 in. Bottom: 0.000 in.

Printer Settings

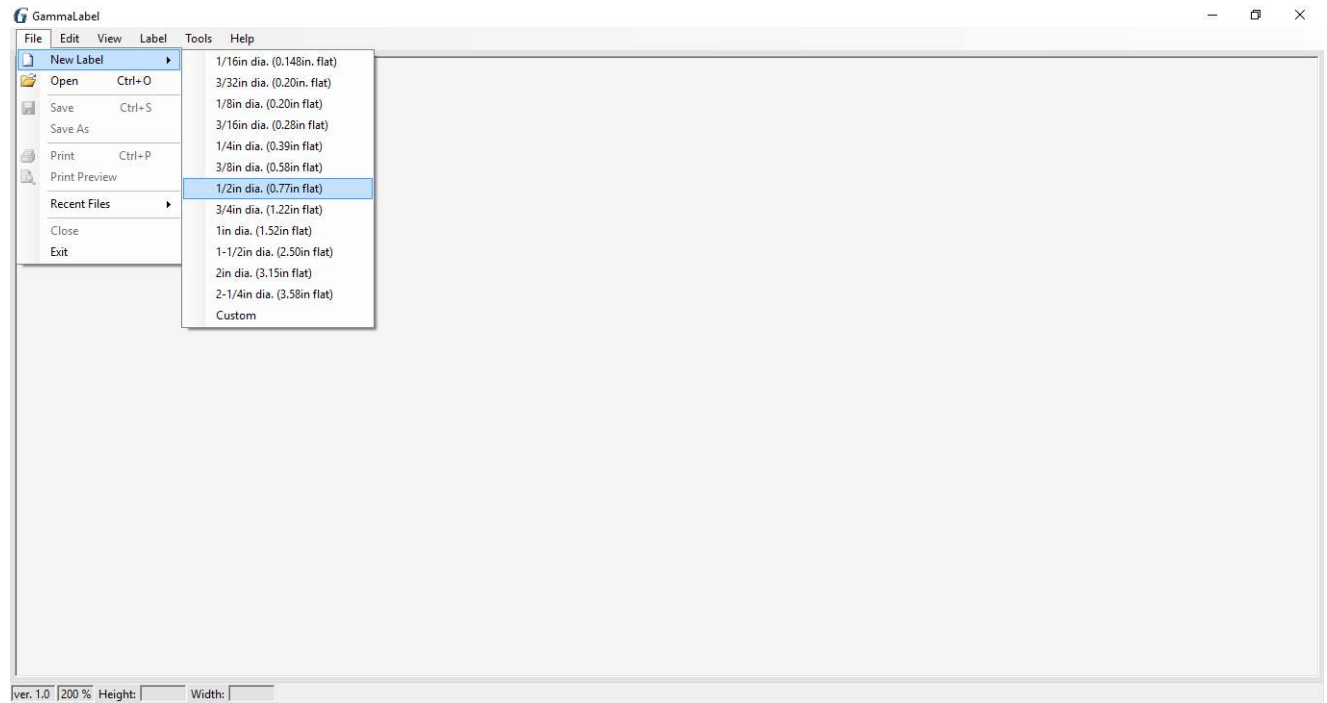
Print Speed: ThreeInchPerSec

Darkness: 12

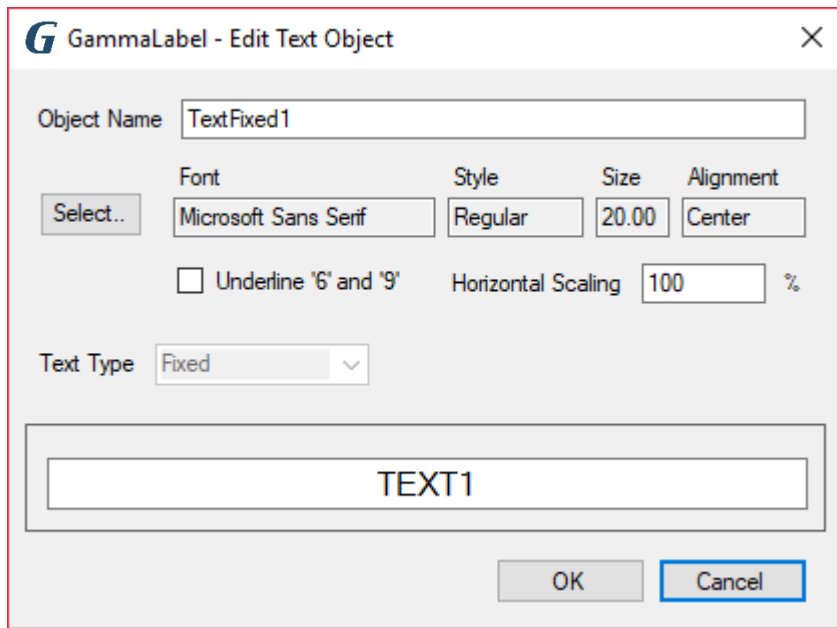
Post-Print Action: Cut

Occurrence: AfterEveryPage

OK Cancel



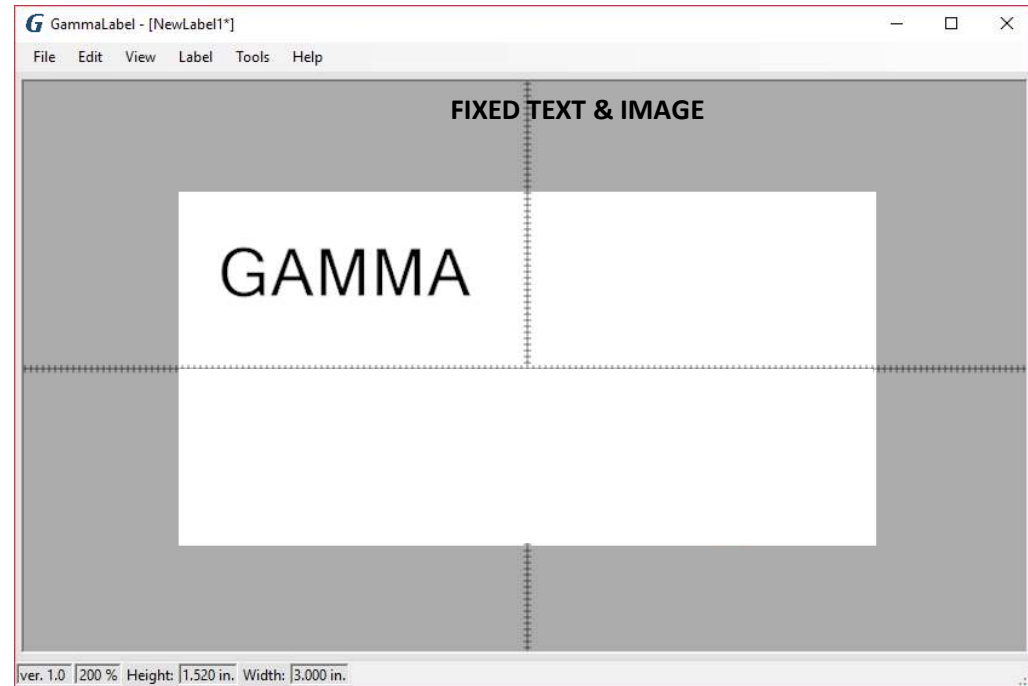
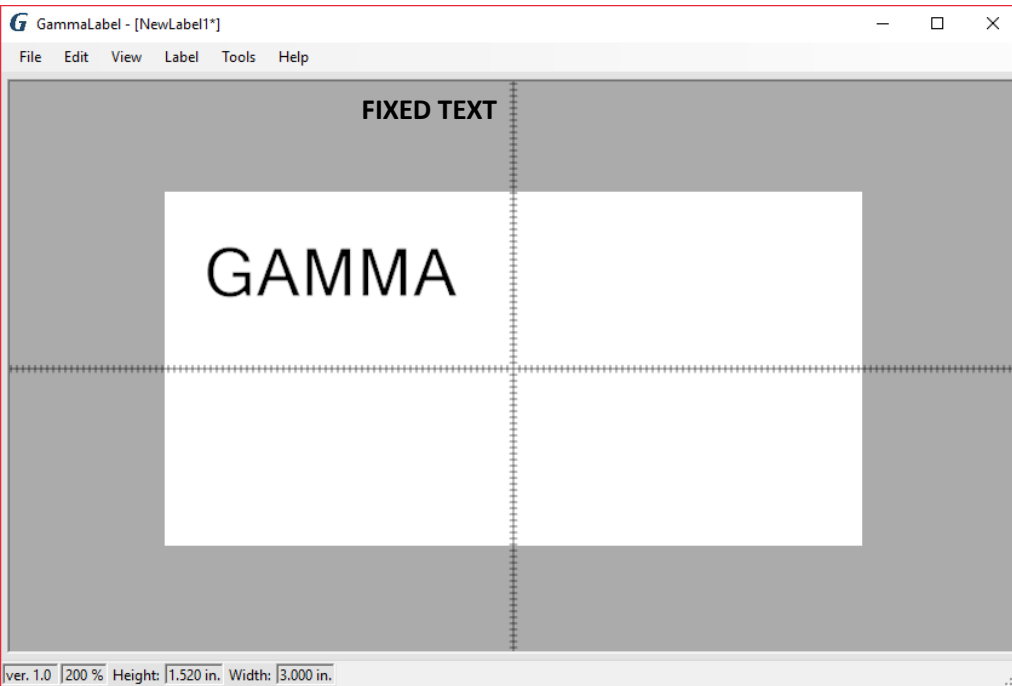
3. Click on Label → Properties
4. Change the width (Length) of label via Fixed Width tab
5. Darkness needs to be 7-13



ADD FIXED TEXT & IMAGE

1. Label → Add → Fixed Text or Image
 - A. Change font style, size & alignment

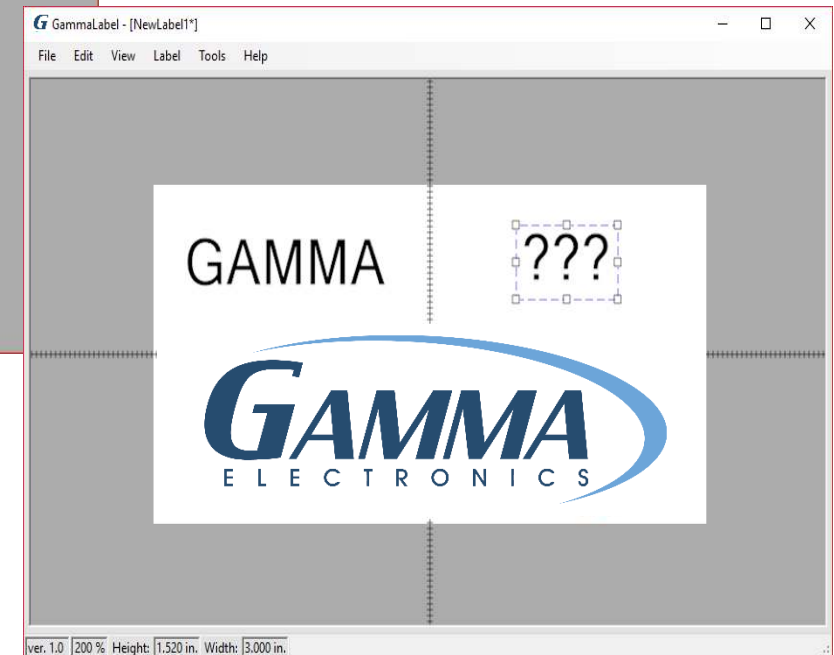
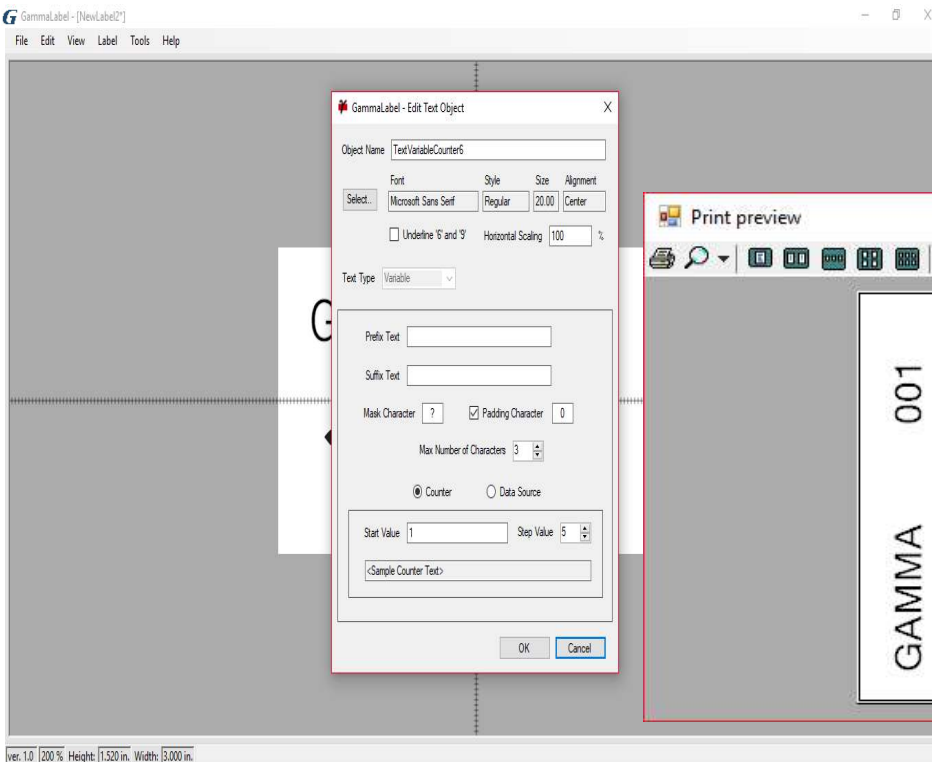
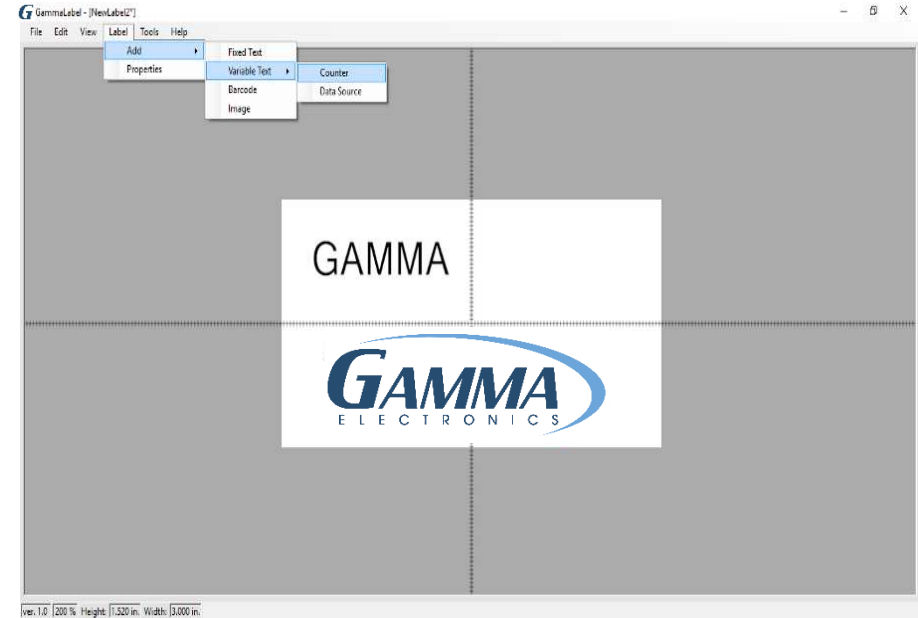
- ← 2. Change Text
3. Click OK
4. Place you fixed text on you label



ADD COUNTER & THE USE OF UNDERLINE 6 & 9

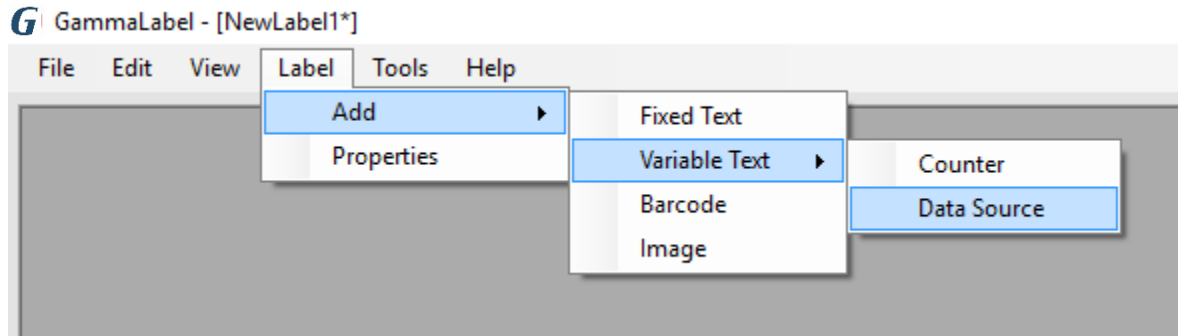
Label → Add → Variable Text → Counter

1. Check mark to underline 6 & 9 if needed
2. Add a prefix or suffix
3. Mask character could be change to 0 or keep as ?
4. Padding Character could be changed to any character
 - A. Please see print preview below with 001
5. Increase the max number of characters
6. Start value 0 or 001
7. Step value from 1 to 5
8. Click OK

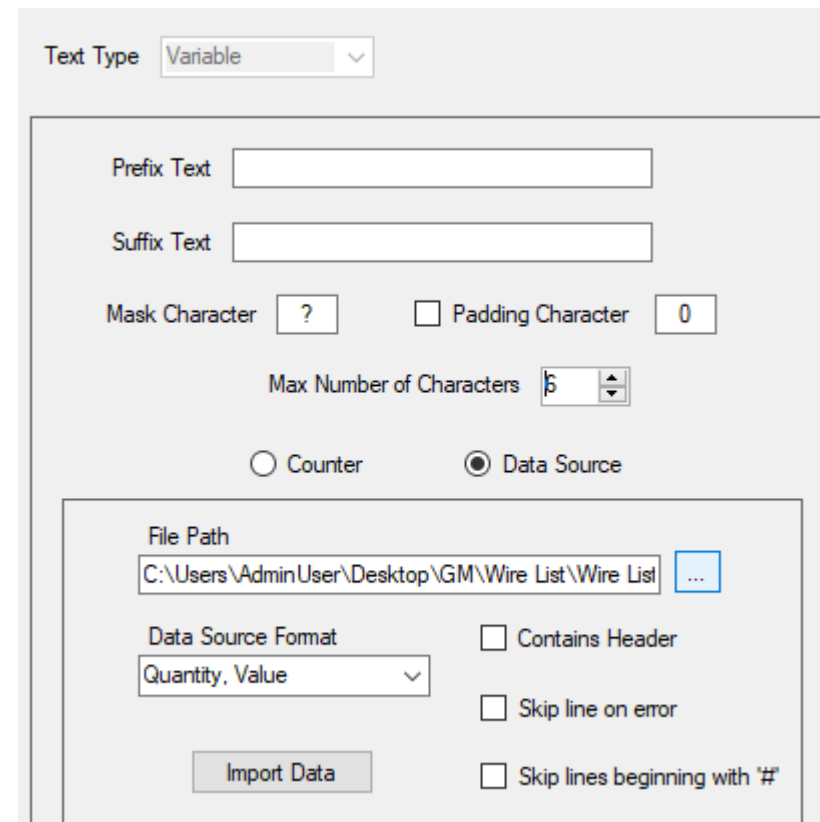


IMPORTING VARIABLE LABEL LIST FROM EXCEL/CSV

1. First convert excel to a CSV file
2. Open new label
3. Click on Add → Variable Text → Data Source



4. Add or remove prefix or suffix
5. Indicate the max number of characters you want
6. Check data source
7. Choose to import quantity column and data (QT/VALUE) or just data (VALUE, VALUE, VALUE)
8. Import data and click OK
9. Place text box where you want to on label

A screenshot of the 'Text Type' dialog box in GammaLabel. The 'Text Type' dropdown is set to 'Variable'. There are input fields for 'Prefix Text' and 'Suffix Text'. Below these are 'Mask Character' (set to '?') and 'Padding Character' (set to '0'). The 'Max Number of Characters' is set to 5. There are radio buttons for 'Counter' and 'Data Source', with 'Data Source' selected. Below this is a 'File Path' field with a file explorer icon, containing the path 'C:\Users\AdminUser\Desktop\GM\Wire List\Wire List'. There is a 'Data Source Format' dropdown set to 'Quantity, Value'. There are three checkboxes: 'Contains Header', 'Skip line on error', and 'Skip lines beginning with #'. At the bottom is an 'Import Data' button.